

SRU Case of the Day 2023



KU RADIOLOGY
The University of Kansas
Medical Center

Jill Jones MD, FSRU

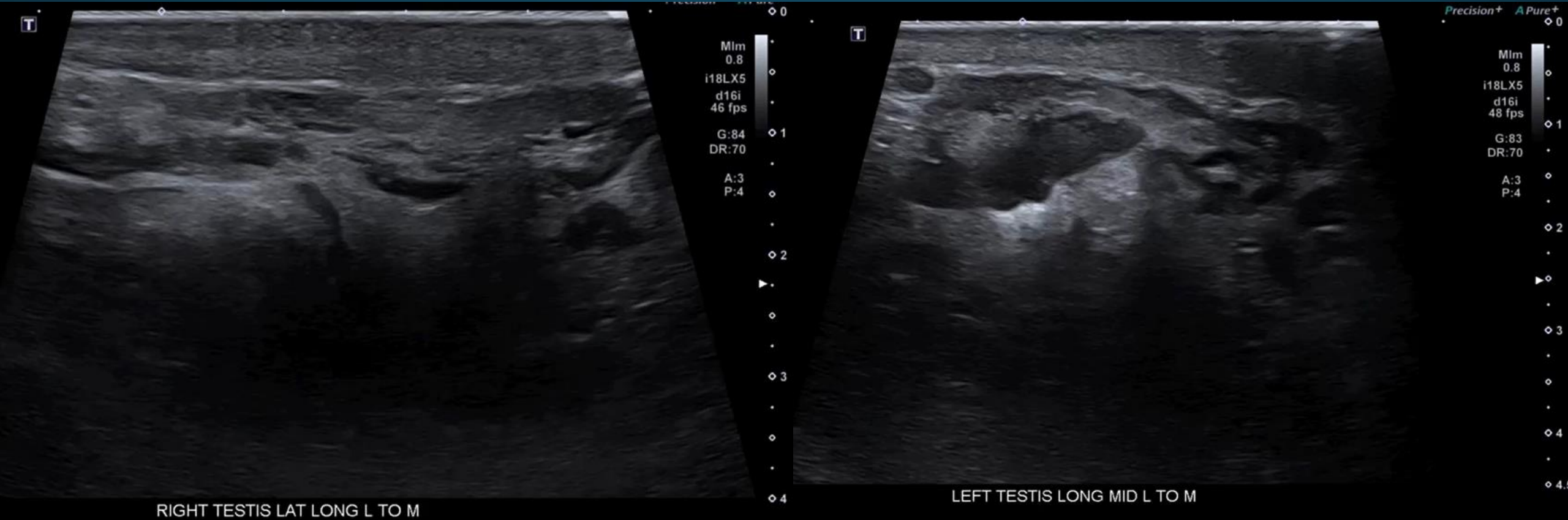
Associate Professor of Radiology
University of Kansas Medical Center

Kansas City, Kansas

jjones6@kumc.edu

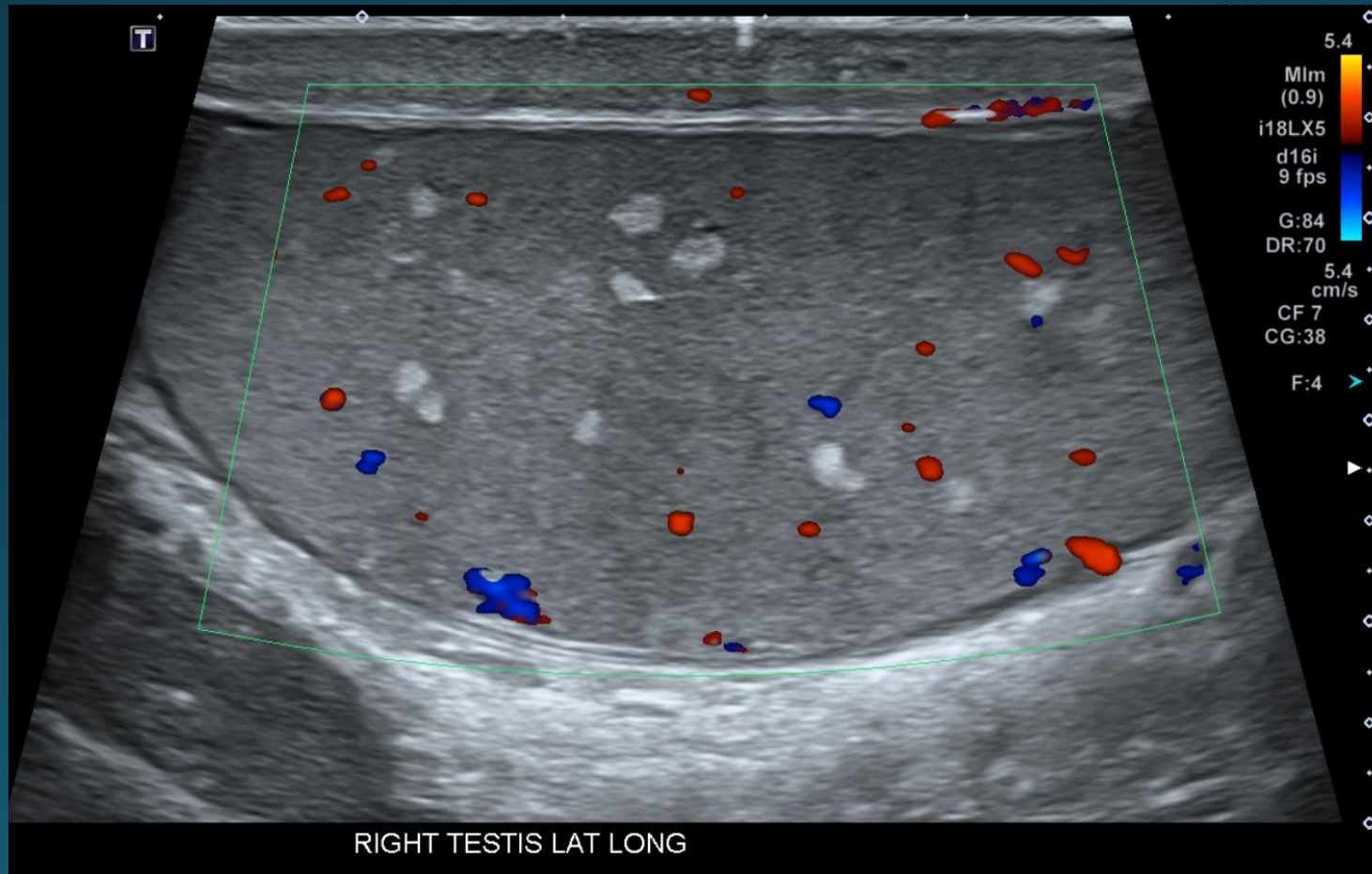
Case 4

42 year old male with chronic scrotal pain. What is the diagnosis?



Key Findings

Numerous solid, hyperechoic, non-shadowing nodules randomly distributed throughout both testicles, sub-centimeter in size, no detectible blood flow



Testicular Lipomatosis

Associated with PTEN hamartoma tumor syndromes

- Most common **Cowden syndrome**
- Rarely Bannayan-Riley-Ruvalcaba syndrome or Proteus syndrome
- Often diagnosed incidentally on ultrasound, should trigger a genetic workup for Cowden syndrome
- Nodules correspond to interstitial lipid on histopathology
- No known association with testicular cancer, therefore no current recommendations for screening US in patients with Cowden syndrome