

# SRU Case of the Day 2023



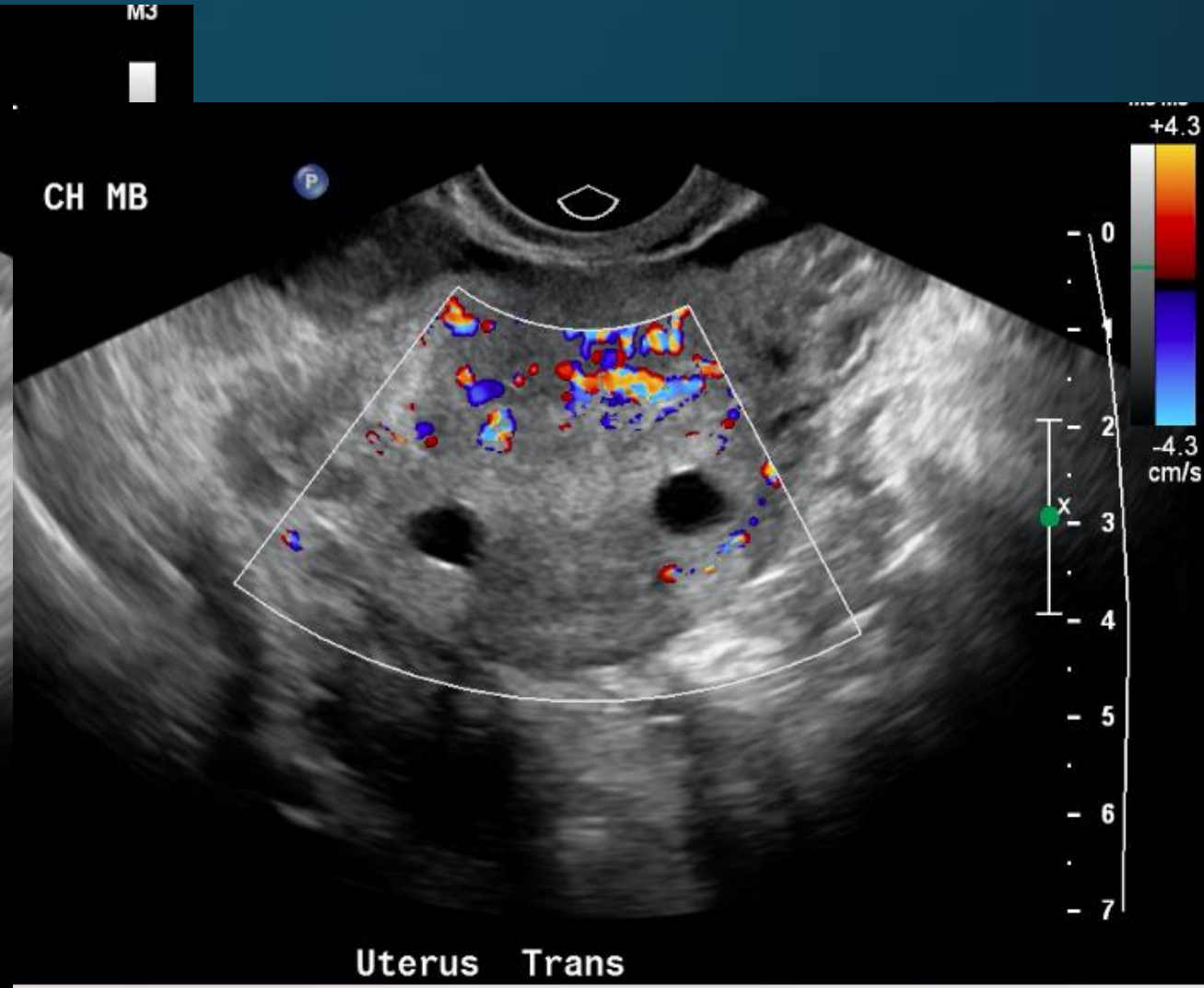
Chad Miller MD

Associate Professor of Radiology  
Duke University School of Medicine

Durham, NC

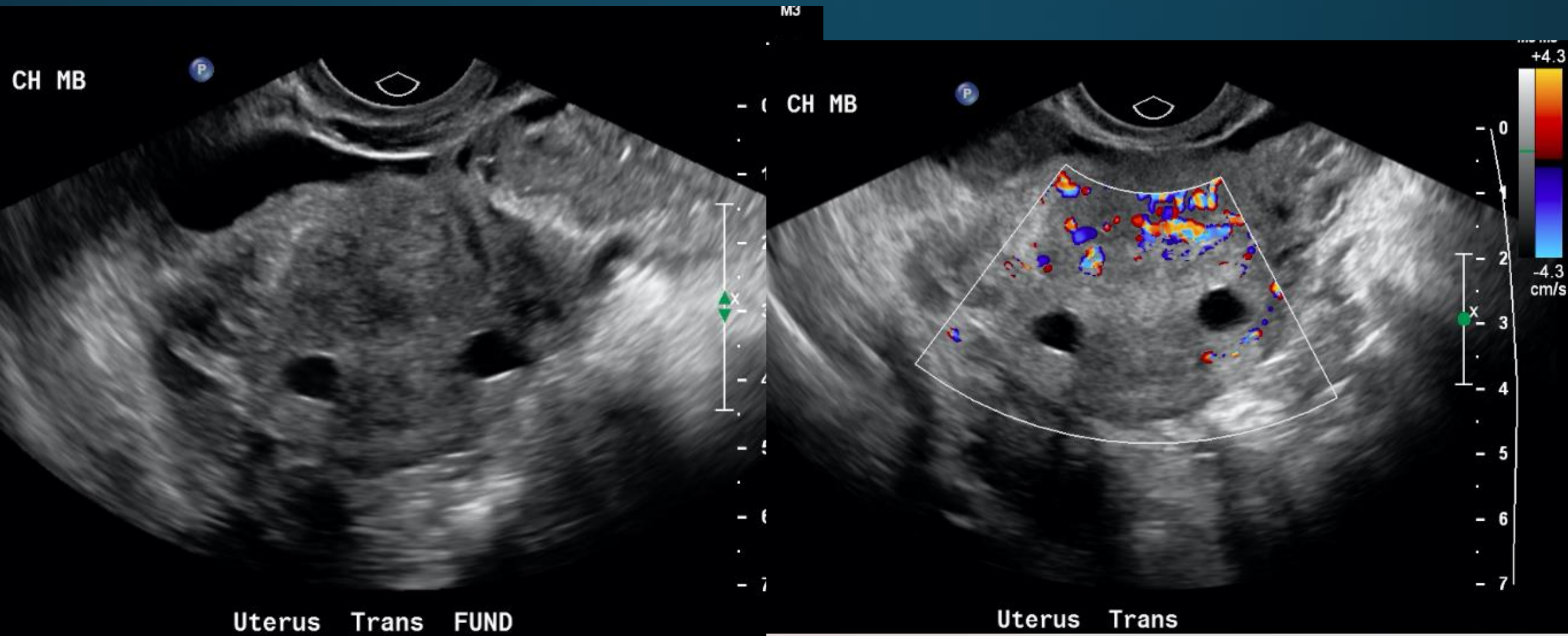
# Case 3

Pelvic pain. History of prior gynecologic procedures.



# Case 3: Findings

Bilateral cystic lesions near the cornua in a patient with prior endometrial ablation.



# Post Ablation Tubal Sterilization Syndrome

- PATSS is an uncommon complication that can occur following endometrial ablation in women with previous tubal sterilization.
- Patients present with pelvic pain, often cyclical
- Postulated cause is recurrent tubal distention resulting from retrograde menstruation into occluded proximal fallopian tube segments by residual/regenerated cornual endometrial
- When visible on ultrasound, findings are unilateral or bilateral cystic lesions near the cornua