

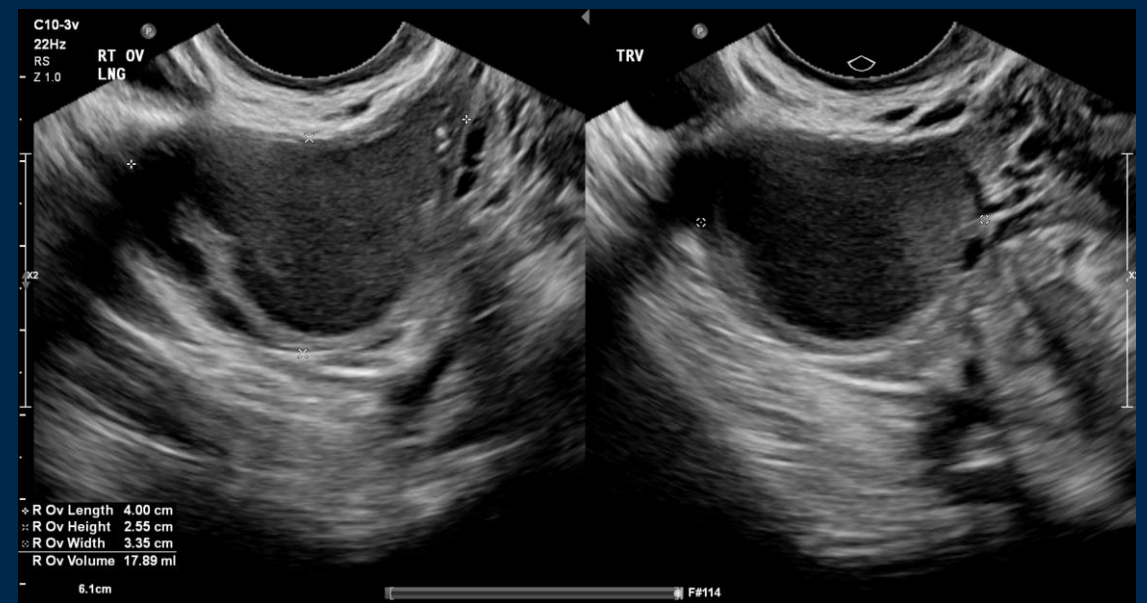
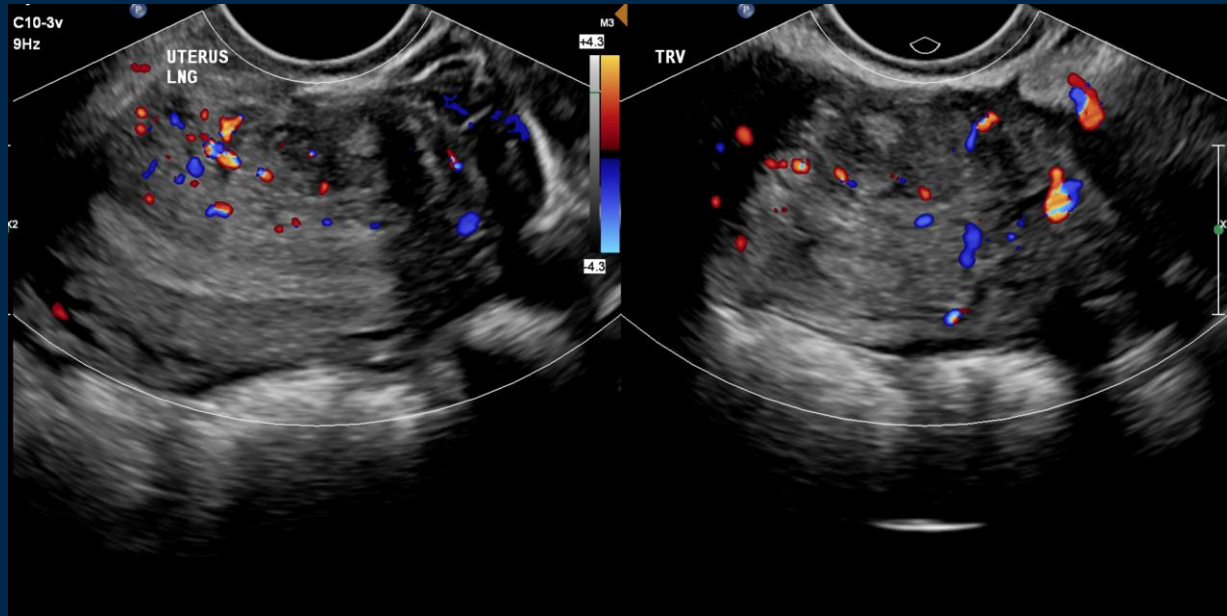
# SRU Case of the Day 2023



Elaine Caoili, MD MS

# Case 3

34 year old female with pelvic pain. What is the diagnosis?



# Case 3: Key Findings

Serosal hypoechoic mass along the posterior uterus. Right ovarian endometrioma



# Deep Infiltrative Endometriosis

- Manifestation of endometriosis defined as ectopic endometrial glands and stroma outside the uterus
- Sonographic appearance includes nodular hypoechoic masses or plaques that can infiltrate ligaments, bowel and bladder
- TVUS sensitivity ranges from 78.5-85.3%, specificity 46.1-92.5%
  - Deslandes A et al. J Ultrasound Med 2020