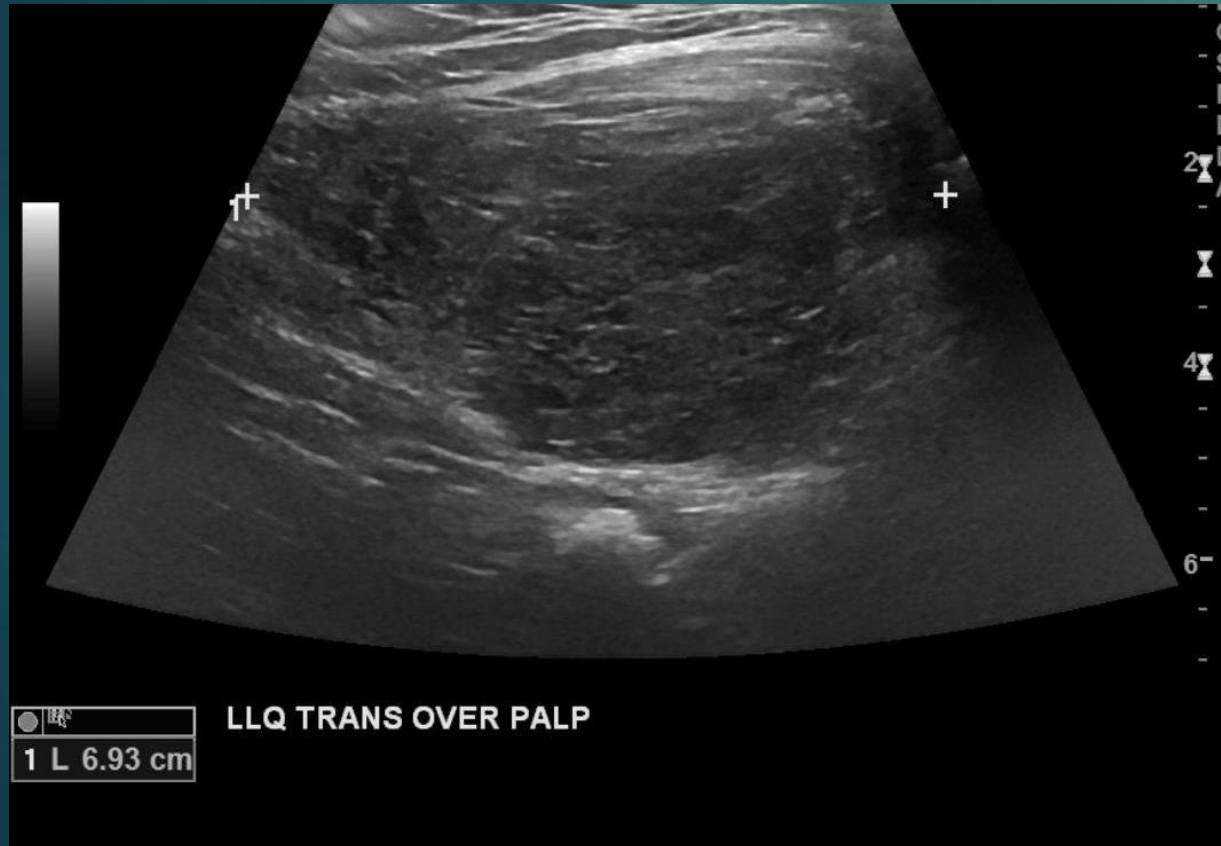





SRU Case of the Day 2023

Kelly Broderick M.D.
California Advanced Imaging Medical Associates

72 yo male with LLQ mass,
“reducible and non-tender”



- 
- ▶ Findings: solid hypoechoic mass with thin echogenic septa looking more like a lipoma than herniated omental fat
 - ▶ During valsalva, the mass rotated rather than popping out

Diagnosis: Lipoma of internal oblique muscle

